

# the Oquirrh

**4,518**  
Square Ft.

**4,404**  
Finished

**6**  
Beds

**3**  
Baths

**1**  
Half Baths

**3**  
Garage



Spacious Primary Bedroom with Vaulted Ceilings •  
Basement ADU with Exterior Entrance • Open Kitchen  
Layout with Island • 2-Story Entry • Flex Room/Office Off of  
Entry • Designer Finishes Throughout

**Chris Jones**  
Desert West Sales Agent  
**801-897-6744**



**kww SOUTH VALLEY**  
KELLER WILLIAMS

# the Oquirrh

4,518  
Square Ft.

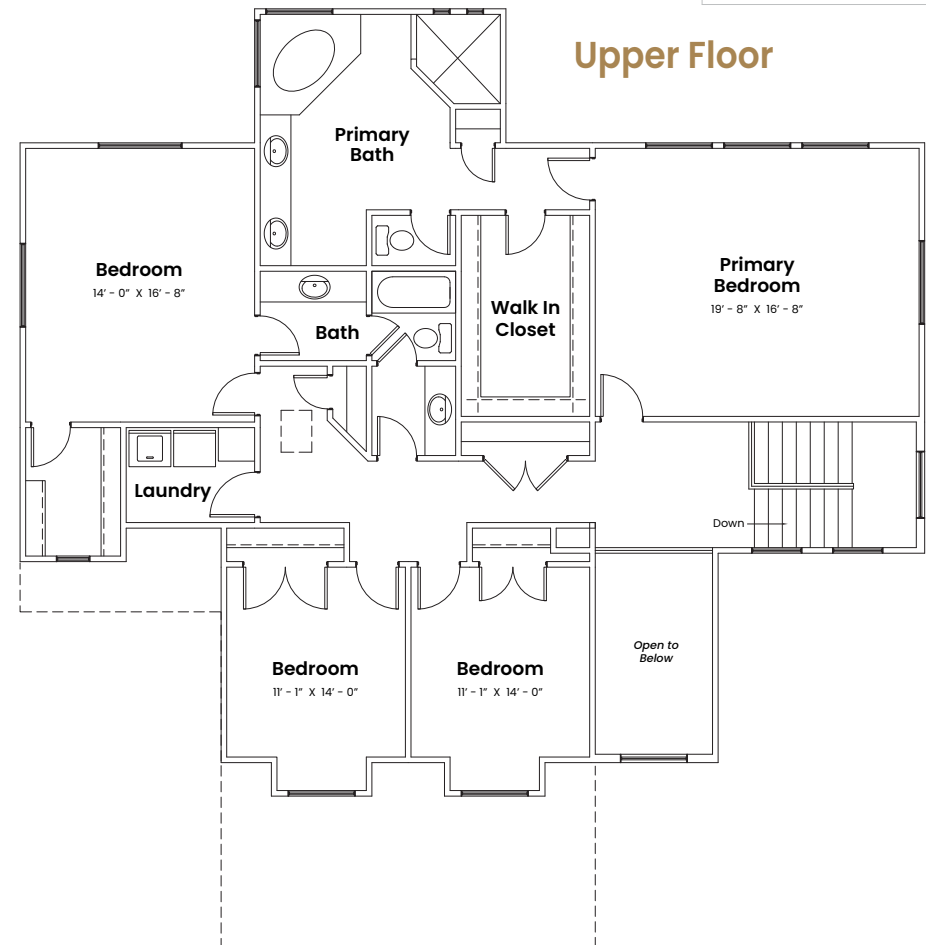
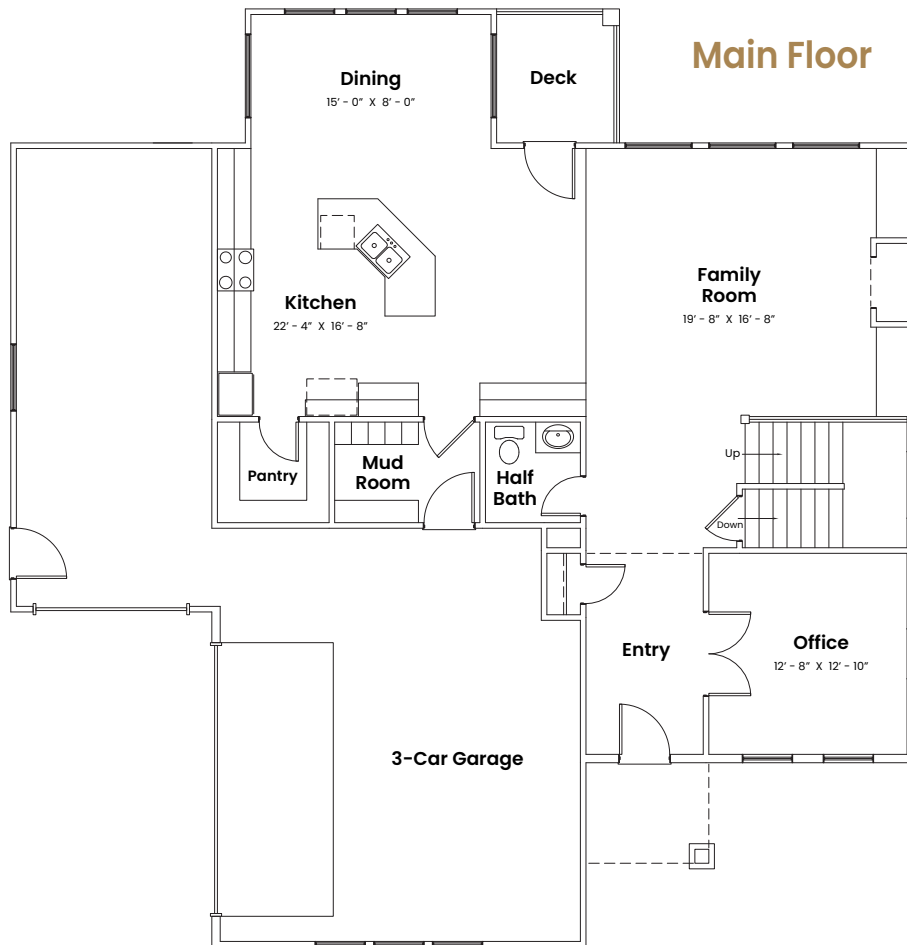
4,404  
Finished

6  
Beds

3  
Baths

1  
Half Baths

3  
Garage



Explore the basement layout and additional details by scanning the QR code or visiting [desertwesthomes.com](https://desertwesthomes.com)



Images, renderings, and floor plans shown are conceptual in nature and intended for general reference only. Features, layouts, square footage, and design elements may be updated or revised at the discretion of Desert West Homes without prior notice. Final home details may differ from what is depicted.